



Readers and
credentials



Simplifying the security industry like never before.

Allegion's aptiQ™ and XceedID® readers and credentials not only feature cutting-edge security technology, but are transforming basic access control products into all-in-one solutions, providing convenience and options to meet the needs of any facility or business.

The aptiQ line of multi-technology readers provides flexibility with an open architecture design. These versatile readers are capable of interfacing with many systems and security products currently on the market to provide you with the security you need now, and support for future technologies.

The wide variety of credential offerings from aptiQ and XceedID allows you to choose the best option to fit any budget or security need. Whether a facility requires a highly secure smart card option with the ability to be used for other applications, or a traditional proximity technology for less demanding installations, Allegion has a credential suitable for nearly any situation.

Introducing aptiQ smart technology

At the center of aptiQ is an open architecture multi-technology reader designed to be ultra easy, complete, and versatile. Built to work with what you have now and into tomorrow—accommodating most manufacturers' magnetic stripe cards, proximity cards, aptiQ smart cards, and the latest in mobile technology (NFC).

The aptiQ line of multi-technology readers are designed to simplify your access control solutions. Transition from proximity to smart card technology at your own pace without having to change out readers as new technologies are available. Also, aptiQ readers are NFC compatible and able to communicate with NFC-enabled phones whenever you're ready to take that step.

aptiQ contactless smart credentials offer a variety of data storage options and impressive data transfer rates in an open architecture design. These credentials can be read by both proximity readers and smart readers. This allows you to economically migrate to the latest smart technology at your own pace.

All this paired with aptiQ's comprehensive support program that's so encompassing, it's like someone opened a door to a new day in customer service. All so you can perform like never before.



aptiQ technology is also integrated into Allegion's full line of electronic access control products

HandPunch® GT-400 with multi-technology reader featuring aptiQ

The HandPunch GT-400 brings the flexibility of a full-function time and attendance terminal together with a versatile multi-technology credential reader. Featuring aptiQ smart card technology, the GT-400 allows employees to clock-in using the same credential they use to enter your building.

AD Series electronic locks with multi-technology readers featuring aptiQ.

AD Series electronic locks feature multi-technology readers that read a variety of proximity and smart cards. Built on the latest smart technology, AD Series locks feature the aptiQ technology as an open solution that allows you to keep up with future advancements.

When you need both smart and proximity technology, we read you.

With our versatile proximity, smart, and multi-technology reader options, we have a solution for any physical access control need. This comprehensive, yet simple reader line-up is suitable for any new smart or proximity installation.

Plus, the multi-technology readers can be used to economically and gradually change over from magnetic stripe or proximity to smart technology in an existing system. Easy to install and stylish in design, these readers can perfectly complement any facility's décor.

aptiQ multi-technology readers

aptiQ multi-technology readers are ideal for any new smart, proximity, or magnetic stripe installation—or as a cost effective way to migrate from existing magnetic stripe or proximity to smart technology.

- 13.56MHz and 125kHz technology in one reader
- Magnetic stripe option
- RS-485 optional
- Anti-microbial keypad
- Compatible with:
 - aptiQ smart credentials
 - using MIFARE DESFire™ EV1
 - using MIFARE® classic
 - Most popular proximity credentials
 - CSN of most existing 13.56MHz credentials
 - Magnetic stripe

aptiQ smart mini-mullion reader

The aptiQ smart mini-mullion reader is an excellent option for a smart-only installation.

- 13.56MHz smart technology
- Compact, unobtrusive design is easily installed in small spaces
- Compatible with:
 - aptiQ smart credentials
 - using MIFARE DESFire™ EV1
 - using MIFARE® classic
 - CSN of most existing 13.56MHz credentials

XceedID proximity mini-mullion reader

This reader is a great solution for proximity-only facilities.

- 125kHz proximity technology
- Compact, unobtrusive design is easily installed in small spaces
- Reads most proximity formats on the market today

Standard features:

- Open architecture design provides compatibility with nearly any access control system on the market
- Easy to install with standard wiring, quick-connect wiring harness and simplified mounting bracket



- LEDs plus audio feedback provides status for visually or audibly impaired
- Standard Wiegand output provides flexibility and optional RS-485 output provides more robust security
- Stylish contemporary designs in multiple finishes to complement any facility's architecture and décor

Multi-technology readers



Model MT11
aptiQ multi-technology
mullion reader

Frequency
13.56 MHz and 125 kHz



Model MT15
aptiQ multi-technology
single gang reader

Frequency
13.56 MHz and 125 kHz



Model MTK15
aptiQ multi-technology
single gang reader with keypad

Frequency
13.56 MHz and 125 kHz



Model MTMS15
aptiQ multi-technology
single gang magnetic stripe reader

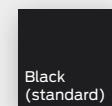
Frequency
13.56 MHz and 125 kHz
Magnetic stripe



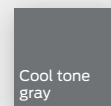
Model MTMSK15
aptiQ multi-technology single gang
magnetic stripe reader with keypad

Frequency
13.56 MHz and 125 kHz
Magnetic stripe

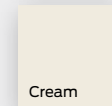
AVAILABLE FINISHES:



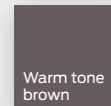
Black
(standard)



Cool tone
gray



Cream



Warm tone
brown

Smart and proximity readers



Model SM10
aptiQ smart
mini-mullion reader

Frequency
13.56 MHz



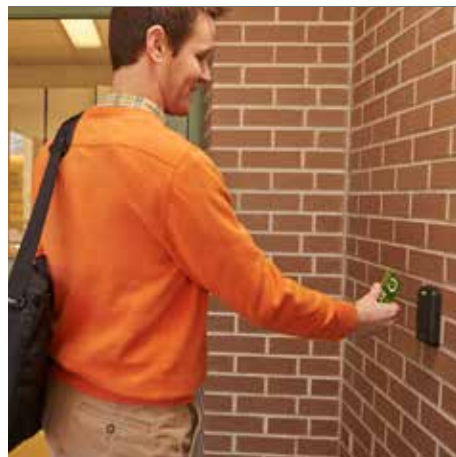
Model PR10
XceedID proximity
mini-mullion reader

Frequency
125 kHz

We pack a lot into every card.

With the latest in smart card technology and traditional proximity technology, we have an option for every budget and business need.

aptiQ smart cards using MIFARE DESFire™ EV1 technology are Allegion's highest security credentials. Or ditch the card altogether by downloading aptiQmobile™ credentials to your compatible NFC-enabled smartphone.



aptiQ smart and multi-technology credentials

aptiQ using MIFARE DESFire™ EV1 technology

These credentials offer the highest in security from Allegion. With multiple memory options, aptiQ credentials using MIFARE DESFire™ EV1 can be used for a variety of applications in addition to access control, such as cashless vending, cafeteria services, transportation, secure printing, and more.

aptiQ using MIFARE® Classic technology

aptiQ credentials using MIFARE® Classic technology are ideal for facilities with moderate security needs, and for businesses that want to use credentials to support multiple business functions.

aptiQmobile technology

aptiQmobile using NFC technology turns an app on your phone into your ID card providing the convenience of using your phone for access control and other closed-loop payment activities all with existing smart readers.

XceedID proximity credentials

XceedID proximity credentials are an excellent solution for facilities with less demanding security needs. XceedID proximity credentials are a cost effective solution, and are able to interface with many industry leading proximity readers including HID's 26-A bit Indala readers

Why transition to smart technology?

- Extra layers of security protection
- Open platform for other applications
- Same cost as proximity credentials
- Keep pace with future technologies

aptiQ mobile

- Works with any phone carrier
- Eliminates need to print IDs and keep an inventory of cards on hand
- Screen lock feature on phone keeps credential safe if phone is lost or stolen
- Credential information stored in same memory location as other app passwords and sensitive information
- Stores a 128 bit AES encrypted credential that has to be decrypted by the access control reader
- Uses patent pending anti-playback technology that prevents cloning

Allegion's credentials are offered in a variety of form factors:



ISO-STYLE CARD

Similar in size and thickness to a credit card; available with magnetic stripe upon request



CLAMSHELL

Credit card-sized credential, highly durable



KEY FOB

Highly durable; able to be attached to a key ring



ADHESIVE PVC PATCH

35mm round or credit card-sized patch that can be attached to existing surfaces (only available as proximity credentials)



MOBILE CREDENTIAL

Credential downloaded directly to your smartphone

About Allegion

Allegion (NYSE: ALLE) creates peace of mind by pioneering safety and security. As a \$2 billion provider of security solutions for homes and businesses, Allegion employs more than 8,000 people and sells products in more than 120 countries across the world. Allegion comprises more than 25 global brands, including strategic brands CISA®, Interflex®, LCN®, Schlage® and Von Duprin®.

For more, visit www.allegion.com

aptiQ ■ LCN ■ **SCHLAGE** ■ STEELCRAFT ■ VON DUPRIN